

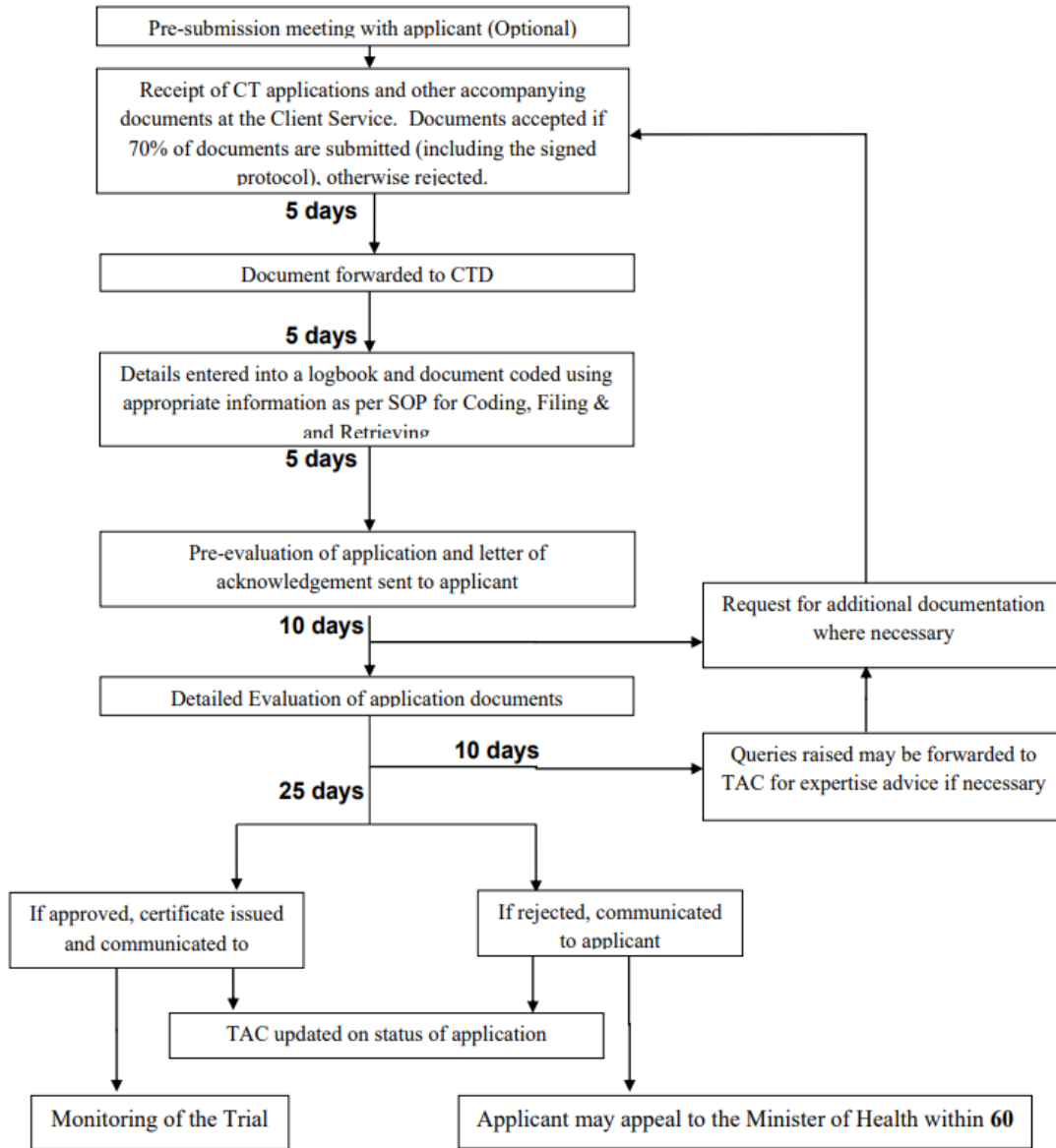
Frequently asked questions on Clinical trials in Ghana

What are the timelines for authorization of clinical trials in Ghana?

1. 60 working days for the routine pathway
2. 30 working days for the reliance/ non routine pathway
3. 21 working days for related clinical trials conducted during public health emergencies i.e epidemics and pandemics

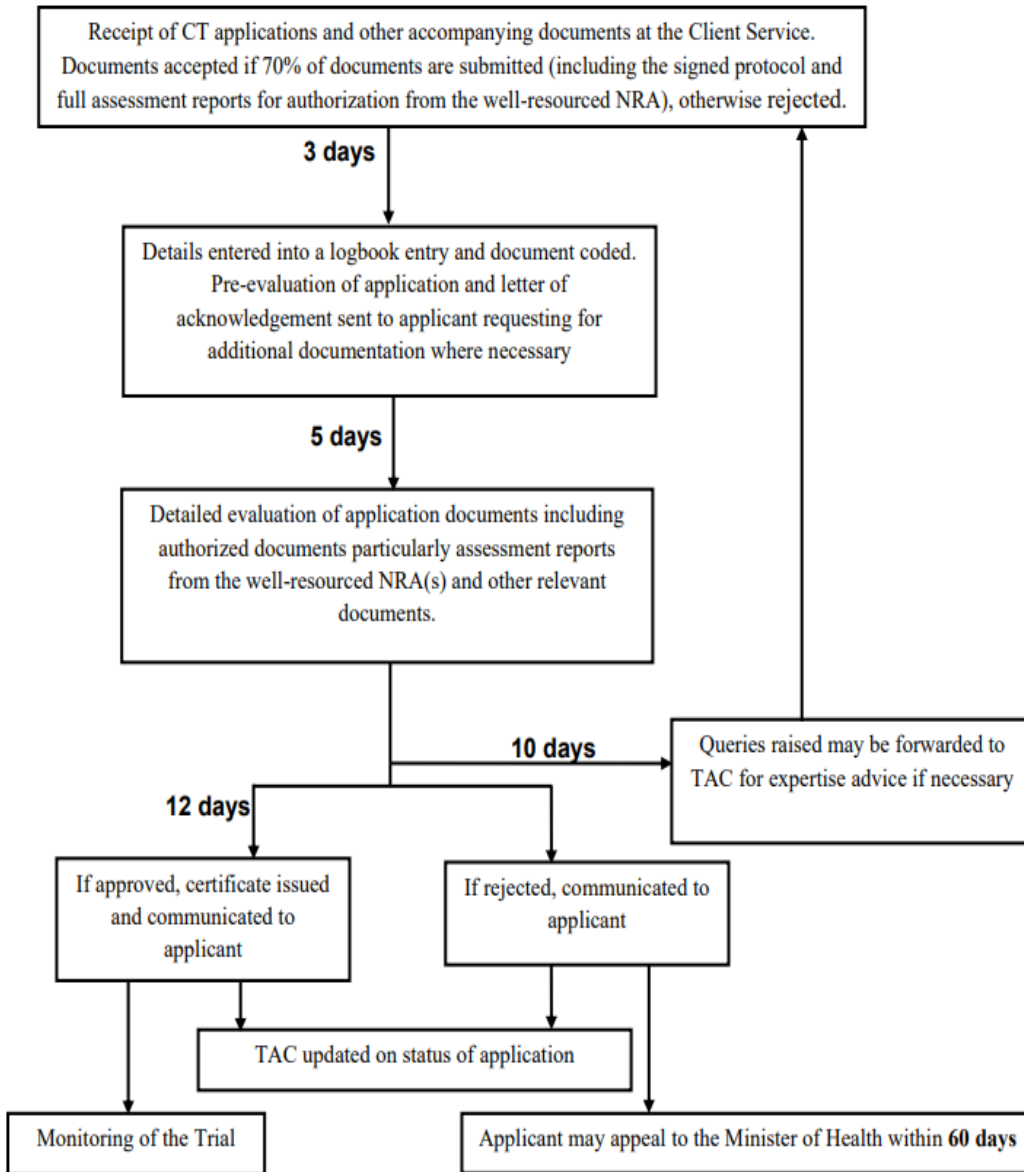
NB: The reliance/non routine pathway is for applications where the safety and efficacy of the product have already been confirmed or when the Clinical Trial has been approved and/or initiated (partly or wholly –phase I/II/III) in a well –resourced setting and by well-resourced regulatory authorities.

APPENDIX II: Clinical Trial Application Process Flowchart



Note: Application process takes a maximum of 60 working days excluding stop clock time

APPENDIX III: Reliance Evaluation and Authorization Pathway for Clinical Trials



Note: Processing of submissions shall take a maximum of 30 working days excluding stop clock time.

