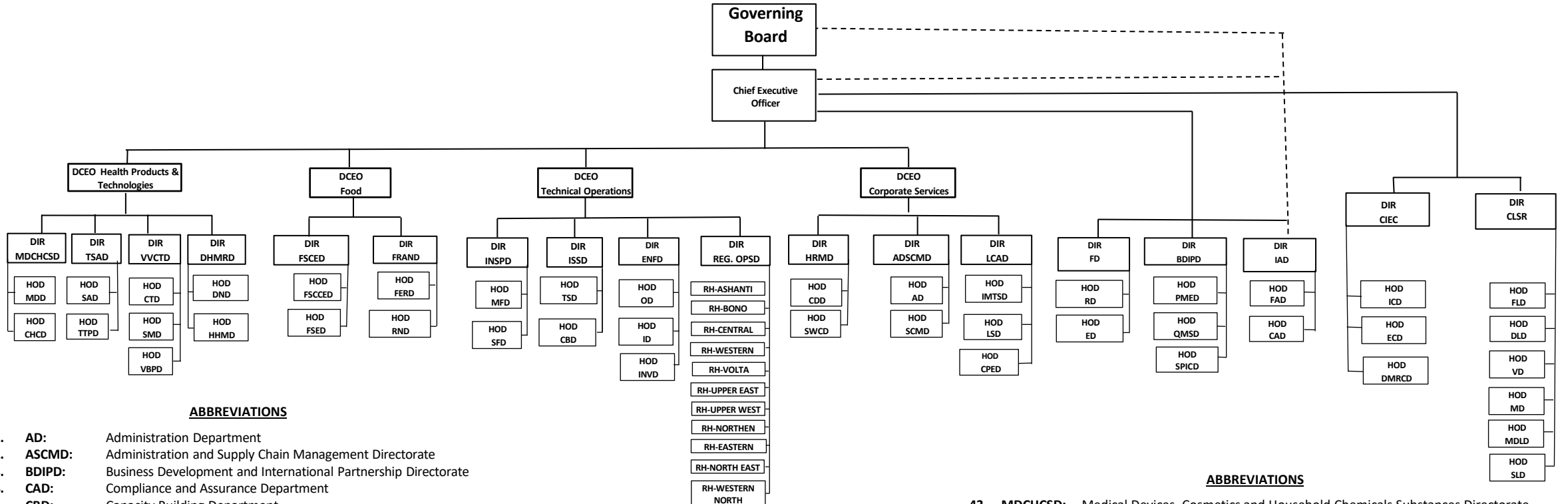


FOOD AND DRUGS AUTHORITY (FDA)

ORGANISATIONAL STRUCTURE



ABBREVIATIONS

ABBREVIATIONS

ABBREVIATIONS

1. **AD:** Administration Department
2. **ASCMD:** Administration and Supply Chain Management Directorate
3. **BDIPD:** Business Development and International Partnership Directorate
4. **CAD:** Compliance and Assurance Department
5. **CBD:** Capacity Building Department
6. **CDD:** Career Development Department
7. **CHCD:** Cosmetics and Household Chemicals Department
8. **CIEC:** Centre for Import and Export Control
9. **CLSR:** Centre for Laboratory Services and Research
10. **CPED:** Communications and Public Education Department
11. **CTD:** Clinical Trials Department
12. **DCEO:** Deputy Chief Executive Officer
13. **DIR:** Director
14. **DLD:** Drug Laboratory Department
15. **DHMRD:** Drug and Herbal Medicines Registration Directorate
16. **DMRC:** Data Management and Risk Control Department
17. **DND:** Drug and Nutraceuticals Department
18. **ECD:** Export Control Department
19. **ED:** Expenditure Department
20. **ENFD:** Enforcement Directorate
21. **FAD:** Financial Audit Department
22. **FERD:** Food Evaluation and Registration Department
23. **FD:** Finance Directorate
24. **FLD:** Food Laboratory Department
25. **FRAND:** Food Registration and Applied Nutrition Directorate

24. **FSCCED:** Food Safety Coordination and Consumer Education Department
27. **FSCED:** Food Safety and Consumer Education Directorate
28. **FSSED:** Food Service Establishment Department
29. **HHMD:** Herbal and Homeopathic Medicine Department
30. **HRMD:** Human Resource Management Directorate
31. **IAD:** Internal Audit Directorate
32. **ICD:** Import Control Department
33. **ID:** Intelligence Department
34. **IMTSD:** Information Management and Technology Systems Department
35. **INSPD:** Inspectorate Directorate
36. **INV:** Investigations Department
37. **ISSD:** Industrial Support Services Directorate
38. **LSD:** Legal Services Department
39. **MD:** Microbiology Department
40. **MDD:** Medical Devices Department
41. **MDLD:** Medical Devices Laboratory Department
42. **MFD:** Manufacturing Department

43. **MDCHCS:** Medical Devices, Cosmetics and Household Chemicals Substances Directorate
44. **REG.OPSD:** Regional Operations Directorate
45. **OD:** Operations Department
46. **PMED:** Planning, Monitoring and Evaluation Department
47. **QMSD:** Quality Management Systems Department
48. **RD:** Revenue Department
49. **RH:** Regional Head
50. **RND:** Research and Nutrition Department
51. **SAD:** Substances of Abuse Department
52. **SCMD:** Supply Chain Management Department
53. **SFD:** Storage Facilities Department
54. **SLD:** Satellite Laboratory Department
55. **SMD:** Safety Monitoring Department
56. **SPICD:** Strategy, Partnership, and Collaboration Department
57. **SWCD:** Staff Welfare and Compensation Department
58. **TSAD:** Tobacco and Substances of Abuse Directorate
59. **TSD:** Technical Support Department
60. **TTPD:** Tobacco & Tobacco Products Department
61. **VD:** Veterinary Department
62. **VVCTD:** Vaccines, Vigilance and Clinical Trials Directorate
63. **VBPD:** Vaccines and Biological Products Department